

# Vertical Single Package Air Conditioners

## **VERT-I-PAK**<sup>®</sup>

**Better Systems Inside & Out**

Installs in a typical mechanical closet

No outside condensing units

Create a more homelike property



**MORE DESIGN FREEDOM** with flexible installation options.

**EASY TO INSTALL** units are pre-charged and pre-piped. No refrigerant lines running floor to floor.

[ Architectural exterior grille ]

[ Remote thermostat ready ]



Cooling only/ Heat pumps/ Electric heat  
9,000 to 60,000 BTU/h

# **Friedrich**<sup>®</sup>

## A Better System Inside and Out



### APPLICATIONS INCLUDE:

- Extended stay properties and hotel suites
- Office buildings
- Schools, classrooms and dormitories
- Renovations and rehabs
- Assisted living facilities

## Give your property a homelike appearance

VERT-I-PAK gives you unlimited design freedom. The unit fits neatly into a typical mechanical closet, so you can create indoor living spaces that are more homelike, versatile and beautiful. Your guests and tenants will enjoy a quieter and more visually dynamic living environment.

# VERT-I-PAK®

## More advantages inside and out

### Sound reduction

Insulated closets deliver better sound levels than exposed PTACs. Additional sound reduction measures can easily be designed into a project.

### Design freedom

Units install in a mechanical closet and can be placed anywhere within the structure for greater design flexibility inside and out.

### Vandalism and theft of outdoor units is eliminated

The entire system is indoors. Costs involved with theft and damage are eliminated and landscaping is a breeze.

### Installs as easily as a PTAC

All units are pre-wired, charged and piped, so only electrical hook up is needed to be up and running.

### Less costly installation

Simple installation reduces labor costs. Total installed cost of VERT-I-PAK® is approximately 50% of the installed cost of water source heat pumps. VERT-I-PAK® is less costly and easier to maintain than split systems or multiple PTACs.

### Superior product

100% factory tested units undergo 64 quality checks.

### Added value

Energy efficient operation, reduced sound levels and lower maintenance costs are attractive benefits for property owners.





## Features for both A & B SERIES

- Ultraquiet operation
- Completely self-contained unit
- No refrigerant lines running from floor to floor
- Easy installation; does not require an HVAC technician
- No outside condensing unit, eliminating the need for external electrical wiring, landscaping and vandalism barriers
- Standard safety power disconnect
- Heat pump or electric heat
- Remote thermostat ready 24-volt transformer
- Optional seacoast protection for harsh coastal environments
- Complete line of accessories
- One packaged unit can be used to condition multiple rooms
- Eliminates the clutter of split systems and need for multiple PTACs
- All units are shipped with return air filter installed

## A-SERIES Unique Features

- Compact and lightweight, weighs as little as 125 lbs.
- Unique free-floating chassis
- 10" crimped and beaded duct-collar ready to attach flex duct
- Easy-to-connect, right or left drain connection
- Corrosion resistant interior
- Easy-to-install front, left, or right hand into closet
- Requires installation against an outside wall for air intake and exhaust



## B-SERIES Unique Features

- Indoor return air and outdoor air can be ducted to allow installation in an interior closet
- Comes standard with a preformed discharge flange
- Internally trapped condensate piping
- Cooling mode freeze protection
- Heat pump operation down to 0° F



Galvanized steel cabinet standard.

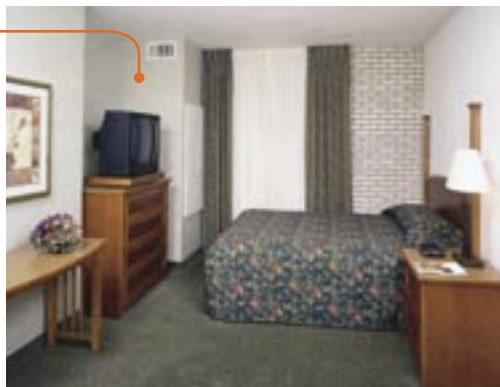
## A-SERIES

9,000 – 24,000 BTU/h

## B-SERIES

18,000 – 60,000 BTU/h

Installs in a typical  
mechanical closet



## INSIDE

With a choice of condenser air configurations you have the flexibility to install the system anywhere within the structure, completely indoors\*.

## OUTSIDE

Without the noise and clutter of outdoor condensing units the building exterior can be utilized for attractive patios, balconies and amenities.

### FAST, FREE\*\* Relief from Installation Headaches!

Now you can be assured that your new Friedrich air conditioners are installed correctly and operating properly before your building is occupied. Our goal is to enhance customer satisfaction, add value to your project and end those installation headaches.

\*VERT-I-PAK A SERIES must be placed against an outside wall.

\*\*Free service for qualifying jobs. Call for details.



## Innovative Products

Known worldwide for quality and dependability

As a leading specialty manufacturer, we focus exclusively on manufacturing innovative air-treatment products that exceed the rigorous standards of a highly-competitive marketplace.

In over 160 countries around the world— in hotels and motels, commercial buildings and residential applications— Friedrich products provide unparalleled comfort, convenience and value.



## VERT-I-PAK A-SERIES Accessories



### ARCHITECTURAL LOUVER - VPAL2

Extruded aluminum grille that attaches to the outdoor section of the wall plenum. Takes in fresh air and returns condensed air. Can be ordered in custom colors.

Dimensions: 25 9/16" W x 31 1/16" H



### WALL PLENUM - VPAWP1-8, VPAWP1-14

Two-part sleeve that telescopes in and out. Sits inside the exterior wall penetration.

VPAWP1 telescopes from 5 1/2"–8"

VPAWP2 telescopes from 8"–14"

Dimensions: 24 1/8" W x 30 3/8" H

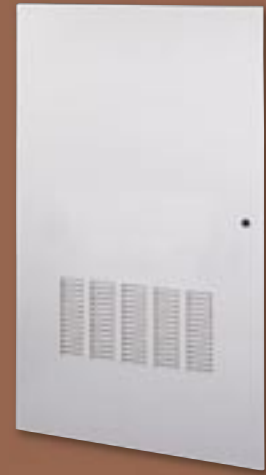
Cutout dimensions: 24 5/8" W x 30 7/8" H

### RETURN AIR GRILLE/ACCESS PANEL - VPRG4

Hinged panel allows access to unit and return air filter. A field-supplied filter (16" x 20") is mounted inside the grille.

Dimensions: 29" W x 58" H

Cutout dimensions: 27" W x 55 3/4" H



### RETURN AIR GRILLE - VPRG2

Interior return air grille that hinges to allow a field-supplied (16" x 20") filter to slip inside. Can be used when an access door/ panel already exists in closet.

Dimensions: 22 3/8" W x 18 7/16" H

Cutout dimensions: 20 1/2" W x 16 1/2" H



### SINGLE STAGE THERMOSTAT - RT2

24-Volt, wall-mounted thermostat. (Single-stage heat and cool). 24-Volt transformer is factory installed into all chassis.



## VERT-I-PAK B-SERIES Accessories

### ARCHITECTURAL LOUVERS

Extruded aluminum outdoor louver attaches to the wall plenum or outside of the building. Can be ordered in custom colors.

VPAL3 – For use with VPWP3  
Dimensions: 28" W x 18" H

VPAL5 – For use with VPWP5  
Dimensions: 38" W x 24" H

VPAL4 – For use with VPWP4  
Dimensions: 30" W x 24 1/4" H

VPAL6 – For use with VPWP6  
Dimensions: 40" W x 34" H



*shown with 1" flush mount flange*

### WALL PLENUMS

Used when chassis is positioned against an exterior wall for outdoor air circulation. Two sizes adjust from 4 1/2"–8" and 8"–14" for varying wall thicknesses.

VPBWP3 -8/14 – For use with 18,000 and 24,000 BTU/h units.

Dimensions: 28 1/4" W x 18 1/4" H

Cutout dimensions: 28 1/2" W x 18 1/2" H

VPBWP4-8/14 – For use with 24,000, 30,000 and 36,000 BTU/h units.

Dimensions: 30" W x 24 1/4" H

Cutout dimensions: 30 1/4" W x 24 1/2" H

VPBWP5-8/14 – For use with 42,000 and 49,000 BTU/h units

Dimensions: 38" W x 24" H

Cutout dimensions: 38 1/4" W x 24 1/4" H

VPBWP6 -8/14 – For use with 60,000 BTU/h units

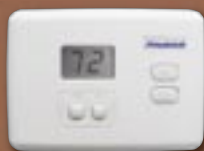
Dimensions: 40" W x 34 1/4" H

Cutout dimensions: 40 1/4" W x 34 1/2" H



### DUAL STAGE THERMOSTAT - RT3

Thermostat designed for use with Vert-I-Pak B-series heat pumps.



### COLD CLIMATE KIT

Applied in climates where the outdoor temperatures reach below 30°F or where water may freeze in the outdoor drain pan.

VPDPH6 – Outdoor coil drain pan heater for 42,000–60,000 Btu/h units\*

\*No additional electrical service is required for these kits.

## VERT-I-PAK® A-Series SPECIFICATIONS

MODEL		V(E,H)A09K	V(E,H)A12K	V(E,H)A18K	V(E,H)A24K
<b>PERFORMANCE DATA</b>					
Cooling Capacity (Btu/h)		9,500	11,800	18,000	23,500
Max Heating Capacity (Btu/h)		17,000	17,000	17,000	34,000
EER		10.8, 10.5	10.8, 10.5	8.7	10.5
Cooling SHR		0.74	0.72	0.70	0.70
Heater Size (KW)		2.5/3.4/5.0	2.5/3.4/5.0	2.5/3.4/5.0	3.4/5.0/7.5/10.0
<b>HEAT PUMP DATA</b>					
Heating Capacity (Btu/h)		8,500	10,600	15,700	22,500
COP @ 47F		3.0	3.2	3.0	3.0
<b>ELECTRICAL DATA</b>					
Voltage (V)		230/208	230/208	230/208	230/208
LRA-Comp. (A)		21.0	21.0	47.0	68.0
Power Connection		Hard Wire	Hard Wire	Hard Wire	Hard Wire
<b>PHYSICAL DATA</b>					
Unit Width (in)		23 1/8	23 1/8	23 1/8	23 1/8
Unit Depth (in)		23 1/8	23 1/8	23 1/8	23 1/8
Unit Height (in)		32 1/4	32 1/4	32 1/4	47 1/4
Shipping Weight (lbs)		125	135	155	220
<b>AIR FLOW DATA</b>					
Indoor CFM		300	350	550	750
Fresh Air CFM		60	60	60	60
Indoor ESP		.30	.30	.30	.30

### NOTES:

Cooling Standards:

95°F DB/75°F WB outdoor, 80°F DB/67°F WB indoor

Heating Standards:

47°F DB/43°F WB outdoor, 70°F DB/60°F WB indoor

Due to continuing research in new energy-saving technology, specifications are subject to change without notice.



## VERT-I-PAK® B-Series SPECIFICATIONS

MODEL		V(E,H)B18K	V(E,H)B24K	V(E,H)B30K	V(E,H)B36K	V(E,H)B42K	V(E,H)B49K	V(E,H)B60K
<b>PERFORMANCE DATA</b>								
Cooling Capacity (Btu/h)		17,000	22,000	30,000	35,000	42,000	48,500	58,000
Max Heating Capacity (Btu/h)		34,100	34,100	51,150	51,150	51,150	68,200	85,250
SEER		10.0	10.0	10.0	10.0	9.7	9.8	9.9
Cooling SHR		0.78	0.75	0.70	0.70	0.72	0.69	0.72
Heater Size (KW)		5/10	5/10	10/15	10/15	10/15	15/20	20/25
<b>HEAT PUMP DATA</b>								
Heating Capacity (Btu/h)		17,000	22,000	26,400	34,000	40,000	49,000	59,000
COP @ 47F		3.0	3.2	3.0	3.0	2.8	2.9	2.9
<b>ELECTRICAL DATA</b>								
Voltage (V)		230/208	230/208	230/208	230/208	230/208	230/208	230/208
LRA-Comp. (A)		42.5	56.0	72.5	88.0	104.0	129.0	169.0
Power Connection		Hard Wire	Hard Wire	Hard Wire	Hard Wire	Hard Wire	Hard Wire	Hard Wire
<b>PHYSICAL DATA</b>								
Unit Width (in)		30	30	30	30	38	38	45
Unit Depth (in)		21	21	21	21	28	28	30 1/2
Unit Height (in)		68	68	68	68	68	68	77
Shipping Weight (lbs)		320	320	330	340	440	460	540
<b>AIRFLOW DATA</b>								
Indoor CFM		640	800	1,000	1,050	1,400	1,500	1,800
Fresh Air CFM		65	65	65	65	70	70	70
Indoor ESP		.30	.30	.30	.30	.40	.40	.40
Outdoor ESP		.30	.30	.30	.30	.30	.30	.30

